

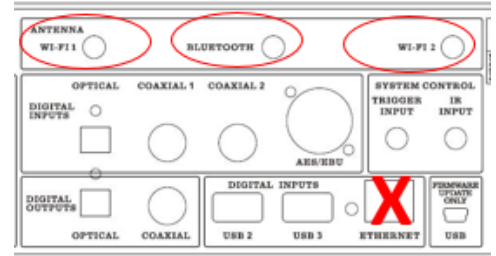
DMS-700 QUICK START GUIDE

First decide how you want to connect the DMS to your Router. Choose either Wi-Fi (two methods) or Ethernet, but **DO NOT** connect both ways. Download the Cary Audio Streamer App to your phone/tablet, but do not have it opened. Additionally, it must be completely closed out and not running in the background.

IF YOU ARE CONNECTING THE DMS WITH WI-FI, **DO NOT CONNECT AN ETHERNET CABLE.**

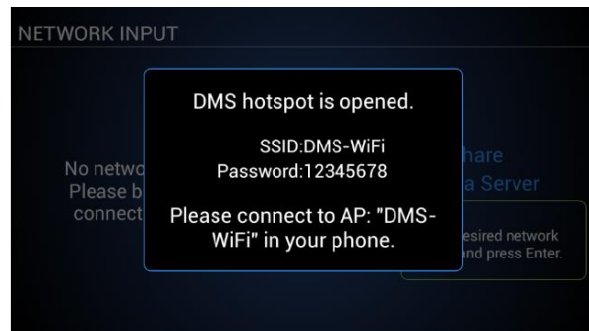
WI-FI SETUP

1. Screw the two Wi-Fi and Bluetooth antennas onto the rear of the DMS.
2. Place the DMS in its location and connect either the XLR or RCA outputs to your preamp, integrated amp, or amplifier.
3. Connect the AC power cord and plug it into the AC outlet.
4. Wait 30 seconds and turn on the DMS. Allow it to fully boot up.



METHOD A – Wi-Fi setup using Cary Streamer App

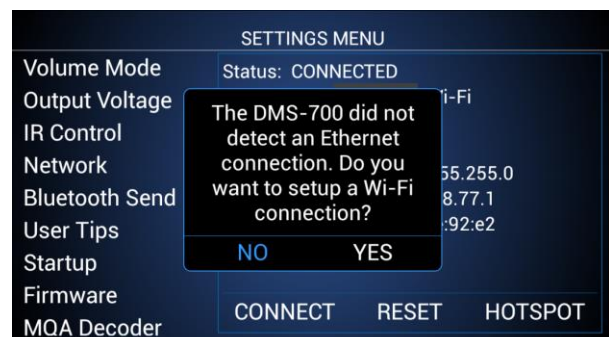
1. Use the **IR handheld remote** to select “**Connect to Wi-Fi with App**” or wait 30 seconds for the DMS Hotspot to automatically open. Make note of the password; **12345678**. (If this screen does not appear, press Network input on the IR remote).



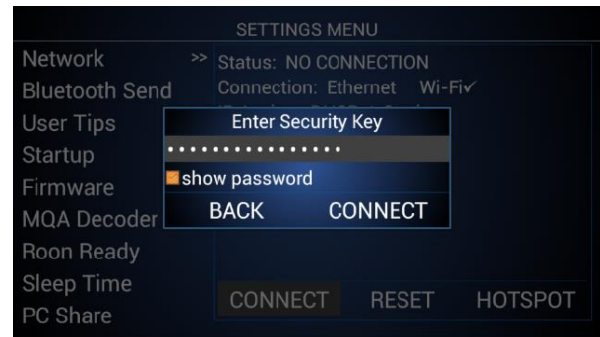
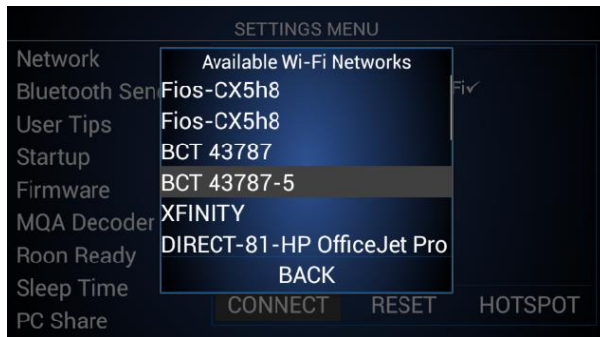
2. Open your phone/tablet **WiFi setup** Menu and connect to **DMS WiFi** hotspot.
3. Once connected to DMS WiFi, open the Cary Audio Streamer app on your phone/tablet and follow the prompts to “**Setup a new DMS**”. **BE SURE TO ALLOW LOCATION SERVICES AND FILE ACCESS WHEN APP PROMPTS.**
4. Once the DMS has successfully connected to your home Wi-Fi network, make sure your phone is also set back to your home Wi-Fi network, and not DMS Wi-Fi.

METHOD B – WiFi setup using IR remote control

1. Using **IR remote control**, select “**Connect to Wi-Fi with IR Remote.**” (If this screen does not appear, press Network input on the IR remote).
2. A prompt will appear confirming you wish to search and setup a Wi-Fi Connection. Select **YES**.



3. Select your **Wi-Fi network** and *press Enter*.
4. *Using the alphanumeric keys on the hand-held IR remote, enter your Security Key, and select Connect.*

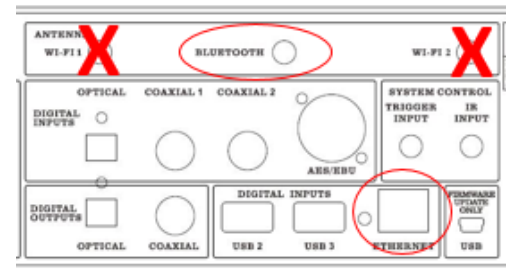


WIRED SETUP (ETHERNET)

IF YOU ARE CONNECTING THE DMS WITH WIRED ETHERNET, *DO NOT CONNECT THE TWO WI-FI ANTENNAS.*

1. Place the DMS-700 within a cable run of your router.
2. *Connect an Ethernet cable to the back of the DMS-700 and plug the other end into your router (or Network/Ethernet Switch).*
3. Connect the AC power cord and plug it into the AC outlet.
4. Wait 30 seconds and turn on the DMS. Allow it to fully boot up.

Note: If connection is not automatically established, *Press Menu* on the IR remote and *navigate to Network Settings* and select **Wired** and **DHCP** (for automatic configuration) and *press Connect*.



Once the DMS has established a network connection, it will default to the USB input. The DMS is now ready to enjoy. Just select whichever input source you wish to listen to i.e.; Network Servers/PCs, Internet Music Services, USB & SD Card.

NOTE: The DMS default volume is set to -30. If connected directly to an amplifier, slowly increase volume to an acceptable level. If connected to a preamplifier, integrated amplifier, or receiver (something with a volume control), set the DMS volume anywhere from 0.0 to +8.0 and leave it. However, it is recommended to set it to +8.0 for **Pure Audio Mode** (assuming your input component can handle a 3.0 volt input) for best sound quality. Subsequent volume control should be done by the preamplifier, integrated amplifier, or receiver.

To get the most out of your DMS it is **HIGHLY recommended** to download the full manual at www.caryaudio.com. Without doing so, you will not fully understand all the settings and operational procedures which could lead to misuse and potential damage to other components as it relates to volume and voltage output control.



Enjoy,

The Cary Audio Team