

C A R Y  A U D I O

OWNER'S MANUAL

CAD-805AE

Mono Power Amplifier

NOTE: Before installing your new component, please read this manual carefully as it will inform you of the product specifications, proper installation and correct operating procedures for your unit. Also included in this manual are guidelines on how to service and care for your new Cary Audio Design product.

IMPORTANT SAFETY INSTRUCTIONS

Important Safety Instructions	2
Welcome	
Thank You	5
Specifications	
Basic Specifications	6
Features	
Product Features	7
Controls and Displays	
Front Panel	8
Top Panel	8
Rear Panel	8
Installation	
Unpacking	9
Warranty Card	9
Placement	9
Operation	
Power Requirements	10
Speaker Cables	10
Interconnect Cables	10
Off/On Power Toggle Switch	10
Standby Toggle Switch	10
‘Break In’ Period	11
Diagrams	12
Troubleshooting Guide	15
Service and Care	
Care and Cleaning	16
Factory Service	16
Non-Warranty Repairs	16
Tube Replacement	17
Limited Warranty	18

IMPORTANT SAFETY INSTRUCTIONS

WARNING: To reduce the risk of fire or electric shock, do not expose this appliance to rain or moisture. The lightning flash with arrowhead symbol within an equilateral triangle is intended to alert the user to the presence of un-insulated dangerous voltage within the product's enclosure that may be of sufficient magnitude to constitute a risk of electric shock to persons.



CAUTION: To reduce the risk of electric shock, do not remove the cover. There are no user serviceable parts inside. Please refer to qualified personnel for service.

ALERT: The exclamation point within an equilateral triangle is intended to alert the user of the presence of important operating and maintenance (servicing) instructions in the literature accompanying the component.

1. **READ ALL INSTRUCTIONS:** All the safety and operating instructions of your Cary Audio equipment should be read before power is applied to the equipment.
2. **RETAIN OWNER'S MANUAL:** These safety and operating instructions should be retained for future reference.
3. **HEED WARNING:** All warnings on the unit and in the operating instructions should be adhered to.
4. **FOLLOW INSTRUCTIONS:** All operating and use instructions should be followed.
5. **CLEANING:** Unplug the unit from the wall outlet before cleaning. The unit should be cleaned only as recommended by the manufacturer.
6. **ATTACHMENTS:** Do not use attachments not recommended by the unit manufacturer as they may cause hazards.
7. **WATER AND MOISTURE:** Do not use the unit near water - for example, near a bath tub, wash bowl, kitchen sink, or laundry tub; in a wet basement; or near a swimming pool.
8. **ACCESSORIES:** Do not place the unit on an unstable cart, stand, tripod, bracket, or table. The unit may fall, causing serious injury to a child, an adult, or damage to the unit. Mounting of the unit should follow the manufacturer's instructions and should use a mounting accessory recommended by the manufacturer.
9. **VENTILATION:** Slots and openings in the cabinet are provided for ventilation to ensure reliable operation of the unit and to protect it from overheating. These openings must not be blocked or covered. The top or bottom panel openings should never be blocked by placing the unit on a bed, sofa, rug, or other similar surface. The unit should not be installed in a built-in location such as a bookcase or rack unless proper ventilation is provided. There should be free space of at least 6 inches (16cm) above the unit and an opening behind the unit.
10. **GROUNDING OR POLARIZATION:** The unit may be equipped with a polarized alternating current line plug (a plug having one blade wider than the other). This plug will fit into the power outlet only one way. This is a safety feature. If you cannot insert the plug fully into the outlet, try reversing the plug. If the plug should fail to fit, contact a licensed electrician to replace your obsolete outlet. Do not defeat the safety purpose of the polarized plug.
11. **POWER SOURCES:** The unit should be operated only from the type of power source indicated on the marking label. If you are not sure of the type of power supplied to your home, consult your unit dealer or local power company.
12. **POWER CORD PROTECTION:** Power supply cords should be routed so that they are unlikely to be walked on or pinched by items placed on or against them. Pay close attention to cords where they enter a plug, or a convenience receptacle, and the point where they exit from the unit.
13. **OUTDOOR ANTENNA GROUNDING:** If an outside antenna or cable system is connected to the unit, be sure the antenna or cable system is grounded so as to provide protection against voltage surges and built-up static charges. Article 810 of the National Electrical Code, NSI/NFPA 70, provides information regarding proper grounding of the mast and supporting structure, grounding of the lead-in wire to an Antenna-discharge unit, size of grounding conductors, location of antenna-discharge unit, connection to grounding electrodes, and requirements for the grounding electrode.

IMPORTANT SAFETY INSTRUCTIONS

14. **LIGHTNING:** For added protection for the unit during a lightning storm, or when it is left unattended and unused for long periods of time, unplug it from the wall outlet and disconnect the antenna or cable system. This will prevent damage to the unit due to lightning and power line surges.
15. **POWER LINES:** An outside antenna system should not be located in the vicinity of overhead power lines or other electric light or power circuits, or where it can fall into such power lines or circuits. When installing an outside antenna system, take extreme care to keep from touching such power lines or circuits as contact with them might be fatal.
16. **OVERLOADING:** Do not overload wall outlets, extension cords, or integral convenience receptacles as this can result in a risk of fire or electric shock.
17. **OBJECT AND LIQUID ENTRY:** Never push objects of any kind into the unit through openings as they may touch dangerous voltage points or short-out parts that could result in a fire or electric shock. Never spill liquid of any kind on the unit.
18. **SERVICING:** Do not attempt to service the unit yourself as opening or removing covers may expose you to dangerous voltage or other hazards. Refer all servicing to qualified service personnel.
19. **REPLACEMENT PARTS:** When replacement parts are required, be sure the service technician has used replacement parts specified by the manufacturer or have the same characteristics as the original part. Unauthorized substitutions may result in fire, electric shock or other hazards.
20. **SAFETY CHECK:** Upon completion of any service or repairs to the unit, ask the service technician to perform safety checks to determine that the unit is in proper operating condition.
21. **WALL OR CEILING MOUNTING:** The unit should be mounted to a wall or ceiling only as recommended by the manufacturer.
22. **HEAT:** The unit should be situated away from heat sources such as radiators, heat registers, stoves, or other units (including amplifiers) that produce heat.
23. **IMPORTANT SAFETY NOTE:** Before connecting a new component such as the DVD 7 to your audio or home theater system it is always good practice to make certain that all components are turned off, and preferably unplugged from their AC power source. Many modern electronics products feature automatic turn-on circuits that may be activated during an installation, causing the potential for damage to electronic components and/or speakers. Such damage is not covered by product warranties and Cary Audio specifically disclaims responsibility for any such damage.

Power Cord: The removable power cord that is shipped with the player is specifically designed to be used with this product. Other AC cords may be used, so consult your dealer for advice on AC power cords and high quality wire in your system.



AC Fuse: The fuse is located inside the chassis and is not user serviceable. If power does not come on, contact your authorized service representative.

Wiring: Cables that run inside of walls should have the appropriate markings to indicate compliance with, and listing by the UL, CSA or other standards required by the UL, CSA, NEC or your local building code. Questions about cables inside of walls should be referred to a qualified custom installer, or a licensed electrician or low-voltage contractor.

Do Not Open the Cabinet: There are no user serviceable components inside this product. Opening the cabinet may present a shock hazard, and any modification to the product will void your warranty. If water or any metal object, such as a paper clip, coin, or staple accidentally falls inside the unit, disconnect it from the AC power source immediately and contact Cary Audio for further instructions.

24. **RECORDING COPYRIGHT:** Recording of copyrighted material for other than personal use is illegal without permission of the copyright holder.
25. **NOTE TO CATV SYSTEM INSTALLER:** This reminder is provided to call the CATV system installer's attention to article 820-40 of the NEC, ANSI/NFPA 70, which provides guidelines for proper grounding and, in particular, specifies that the cable ground shall be connected to the grounding system of the building, as close to the point of cable entry as practical.

IMPORTANT SAFETY INSTRUCTIONS

26. FCC INFORMATION FOR USER:

CAUTION: ANY changes or modifications not expressly approved by the party responsible for compliance could void the user's authority to operate the equipment.



NOTE: This equipment has been tested and found to comply with the limits for a Class B digital device pursuant to Part 15 of the FCC Rules.

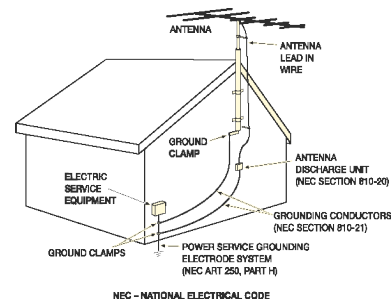
These limits are designed to provide reasonable protection against harmful interference in a residential installation. This equipment generates and can radiate radio frequency energy and, if not installed and used in accordance with the instructions, may cause harmful interference to radio communications. However, there is no guarantee that interference will not occur in a particular installation. If this equipment does cause harmful interference to radio or television reception, which can be determined by turning the equipment off and on, the user is encouraged to try to correct the interference by one or more of the following measures:

- Reorient or relocate the receiving antenna.
- Increase the separation between the equipment and receiver.

Connect the equipment into an outlet on a circuit different from where the receiver is connected.

27. OUTDOOR ANTENNA INSTALLATION/SAFE ANTENNA AND CABLE CONNECTION:

If an outside antenna or cable system is connected to the equipment, be sure the antenna or cable system is grounded so as to provide protection against built up static charges and voltage surges, Section 810 of the national Electrical Code, ANSI/NFP A70 (in Canada, part 1 of the Canadian Electrical Code) provides information with respect to proper grounding of the mast and supporting structure, grounding of the lead-in wire to an antenna discharge unit, size of grounding conductors, location of antenna discharge unit, connection to grounding electrodes and requirements for the grounding electrode.



Keep Antenna Clear of High Voltage Power Lines or Circuits

An outside antenna system should be located well away from power lines, electric light or power circuits and where it will never come into contact with these power sources if it should happen to fall. When installing an outside antenna, extreme care should be taken to avoid touching power lines, circuits or other power sources as this could be fatal. Because of the hazards involved, antenna installation should be left to a professional.

WELCOME

THANK YOU

Congratulations on becoming a Cary Audio owner!

We, at Cary Audio, would like to thank you for purchasing our products.

Since its founding in 1989, Cary Audio has stayed at the forefront of home entertainment equipment by stubbornly adhering to the principles of quality and musicality upon which it was founded. It's not enough just to be able to build great sounding gear, but it needs to be well-made, reliable, and maintain its performance and value for many years. Cary Audio has certain criteria that have guided us since we began, and are still our primary focus.

We firmly believe in high performance products that offer incredible value for the money, backed by superior engineering and design, and supported by exceptional customer service. Whether a headphone amplifier or a world-class surround sound processor, Cary Audio uses the highest quality components available within the audio circuit, resulting in extraordinary sound quality. This is a well-known hallmark of all Cary Audio products.

As Cary Audio approaches a quarter-century of providing the best in sophisticated music systems, we remain committed to our goals of building the very best products, at real-world prices, and supporting them with world-class service. Let our passion for the very finest sound and picture quality help you better enjoy your music and movies! Thank you for your continued support!

The Cary Audio Team

SPECIFICATIONS

Operating the CAD-805AE is a simple procedure, since each unit is designed for long term stability in virtually any home operating situation. However, if the unit is operated outside the parameters outlined in this owner's manual, damage may result. Please read this manual carefully before putting your new CAD-805AE in operation.

The following section describes the CAD-805AE's basic specifications. The specifications are subject to change without notice or obligation.

Power Output	50 Watts 'Class A' operation mode
Feedback	0 to 10 dB, continuously variable control
Frequency Response	20 to 20 kHz + 0.5 dB
AC Power Requirements	100, 110, 117, 220, 240, / 50-60 Hz, set by market
Power Consumption	230 watts - OPERATE, 76 watts - STANDBY
Shipping Weight	105 lbs. (47.7 kg.)
Input Impedance	150kohms
Output Impedance	4, 8 and 16 ohm speaker connection terminals
Signal to Noise	> 80 dB below rated output
Sensitivity	1.0 Volt @ zero feedback for full output
Coupling Capacitors	Oil filled capacitors
Power Supply Capacitors	4 - 1500 μ Fd @ 450V
Transformers	1 - EI Laminated core power transformer 1 - Special air-gap output transformer 200% duty cycle on all transformers
Tube Compliment In each amplifier chassis	1 - 1629/6U5 'Cat Eye' tube 2 - 6SN7 input tubes 1 - 300B driver tube 1 - 845 output tube or (Please choose 845 or 211 during install) 1 - 211 output tube (Please choose 211 or 845 during install)
Warm-Up Time	5 minutes, after initial break in period
Break-In Period	100 hours of music playing time
Finish	Jaguar 'Anthracite Black' chassis
AC Cord	3 conductor cord, detachable
Dimensions	10" H x 12-1/4" W x 24" D (25.4 x 31.2 x 61 cm)
Net Weight	85 lbs. (38.6 kg.)

FEATURES

The following section describes the CAD-805AE's basic features. The features are subject to change without notice or obligation.

PRODUCT FEATURES

After ten years of continuous production we are proud to offer the CAD-805 Anniversary Edition. Each unit is designed for long term stability in virtually any home operating situation. Note that if the unit is operated outside the parameters outlined in this owner's manual, damage may result. Please read this manual carefully before operating your new CAD-805AE power amplifiers.

The CAD-805 Anniversary Edition offers 50 watts per channel, Pure Class A Single Ended Triode Mono Blocks with dual 6SN7 input stage, 300B driver stage tube, includes both 845 and 211 output tubes. It offers a user selector switch for the output tube, a Jaguar Anthracite black chassis and top plate with clear coat finish, and an anodized aluminum front panel with a ZERO feedback design.

The CAD-805 has been through many versions through the years, improving on what already proved to be an outstanding power amplifier. The new design for the Anniversary Edition even includes the ability to switch from the 211 (output) tube to the 845 (output) tube.

CONTROLS AND DISPLAYS

FRONT PANEL

CAT EYE TUBE Indicates approximate power output level. When the eye is completely closed the amplifier is at full power output.

TOP PANEL

OFF-ON TOGGLE SWITCH Turns AC power on in the rear position. The output tube will not light at this point.

STANDBY SWITCH Turns the filament of the output tube on in the rear position.

TUBE SELECTOR SWITCH Set either to 211 or 845 before installing selected output tube.

FEEDBACK LEVEL Adjusts the level of feedback from 0 to 10 dB

REAR PANEL

INPUT Signal input connection via shielded RCA interconnect cable

OUTPUT Three 5-way binding posts provide output to the speaker system (4, 8 or 16 ohm connections).

FUSE AC power fuse. Never replace with any other value than 3 AMP SLOW BLOW FUSE! 250 VOLT!

TUBE FUSE Never replace with any other fuse than ¼ amp FAST BLOW FUSE!

INSTALLATION

UNPACKING

This section describes the proper unpacking and installation procedures for your new component.

Unpacking

All Cary Audio shipping cartons have been specially designed to protect their contents and special care has been taken to prevent damage under normal shipping conditions. Mishandling should be evident upon inspection of the shipping container. If shipping damage is found after visual inspection, take care not to destroy the evidence. If necessary, document the damage with photographs and contact the transport carrier immediately.

Carefully remove your new component from its packing carton and examine it closely for signs of shipping damage. We strongly recommend saving all original packing cartons to protect your component from damage should you wish to store it or ship it at a later date.

In the Box

When unpacking your CAD-805AE amplifier, make sure the following accessories are included. You should find the following items within the box:

- Power Cable
- Owner's Manual
- Warranty Card
- Complete Tube Set (refer to "tube compliment" in SPECIFICATIONS section)
- Bias Meter

WARRANTY CARD

IN THE USA: If you are the original purchaser of a new unit purchased from an authorized Cary Audio dealer, please fill out the enclosed warranty registration card and return it to Cary Audio within 15 days of your purchase. Cary Audio also suggests that you keep your original packing cartons in case you ever need to ship the unit. Warranty restrictions apply. Consult the warranty section at the end of this manual for details. Please be certain to keep a copy of the original sales receipt from your direct purchase from Cary Audio or your authorized Cary Audio dealer to validate the warranty if ever needed. The warranty is for the original purchaser only and does not transfer to any subsequent owner.

OUTSIDE THE USA: Your local authorized Cary Audio distributor will make his own warranty policy for your country. Please check with them for the terms of warranty for your new amplifier.

PLACEMENT

In general, the location of your new CAD-805AE is not critical. Certain precautions must be taken to ensure optimum performance. Avoid extremely hot locations such as near radiator or other heating units. Keep the top of the CAD-805AE clear of books, paper or other equipment to protect against overheating.

OPERATION

POWER REQUIREMENTS

The CAD-805 Anniversary Edition is designed to operate from house current AC mains. The design voltage is 117 Volts AC at 50/60Hz (Foreign units 234 Volts AC at 50/60Hz).

SPEAKER CABLES

The speaker cables from the output posts of the CAD-805 Anniversary Edition to the speaker system can be any length that your setup requires. Select speaker cables of sufficient size to preserve the outstanding performance capabilities and sound quality of your new power amplifiers.

Heavy duty #14 gauge wire is suitable for distances up to 15 feet; #10 gauge is good for 25-30 feet. Most audio dealers have high performance speaker cable in stock for this purpose. We strongly urge you to try several types to find the best ones for your combination of components and speakers.

INTERCONNECT CABLES

Signal input connection is made via the RCA input jack on the rear of the amplifier located next to the output binding posts. The input interconnect cables from the output of the preamplifier can be any length your installation requires. A shielded high quality interconnect cable is important to reduce chances for hum or interference. Ask your Authorized Cary Audio dealer for advice.

Your new amplifier is ready for operation after the speaker cables, interconnect cables and the tubes have been installed. Choose either the 211 or the 845 output tube with the top panel tube selector switch, according to the actual one installed. Only change this switch setting with the amplifier OFF.

WARNING

- FAILURE TO INSTALL THE TUBES CORRECTLY WILL DAMAGE THE UNIT. Watch the tube pins carefully on the 300B tube during installation as it is possible to force the tube to plug in 'wrong' during installation. The 300B tube has no 'safety key' center pin on the tube to prevent incorrect installation. It has two large pins and two slightly smaller pins. Please look carefully at the tube pins and the tube socket holes to note the two different size connections prior to installation. Incorrectly plugging in the 300B driver tube will possibly damage the amplifier and is not covered by the manufacturer's warranty. Please see the DIAGRAMS section for further instructions on tube placements.

OFF/ON POWER TOGGLE SWITCH

Push the AC toggle switch toward the rear, to the "ON" position. The 6SN7 input tubes, 1629 Cat Eye tube and the 300B driver tube will light up in this setting.

STANDBY TOGGLE SWITCH

Push the toggle switch toward the rear of the unit to operate. The output tube will light up.

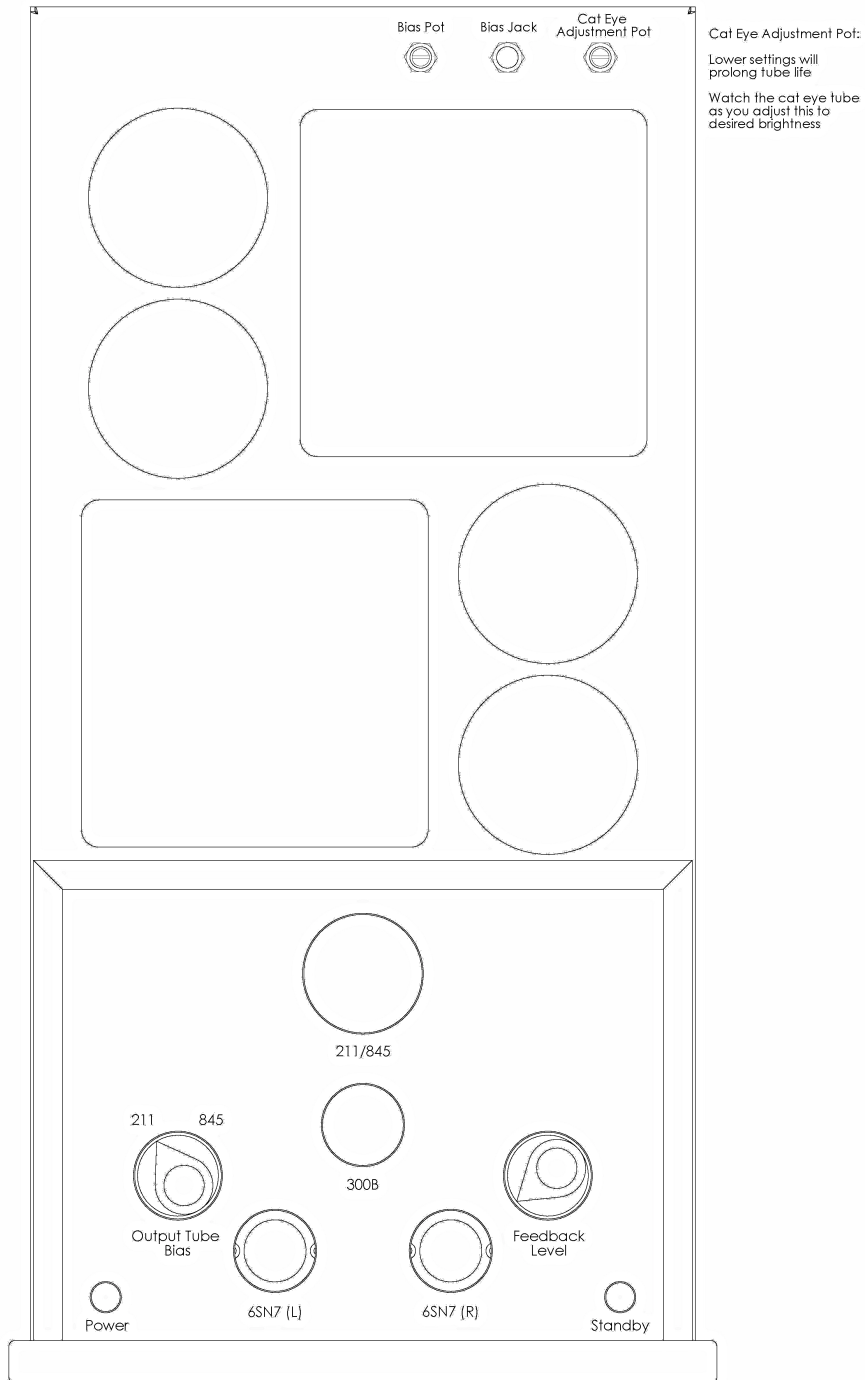
OPERATION

'BREAK IN' PERIOD

The tubes, capacitors and the output transformers take approximately 100 hours of music playing to fully settle in for peak performance. Small imperfections in the tube surfaces will 'boil off' during the break in period as well. The amplifier will sound good right out of the box but it will improve as break in occurs. After the first couple of hours you will notice increased depth and tighter bass. This break in period is true with most high performance audio amplifiers.

DIAGRAMS

TUBE PLACEMENT



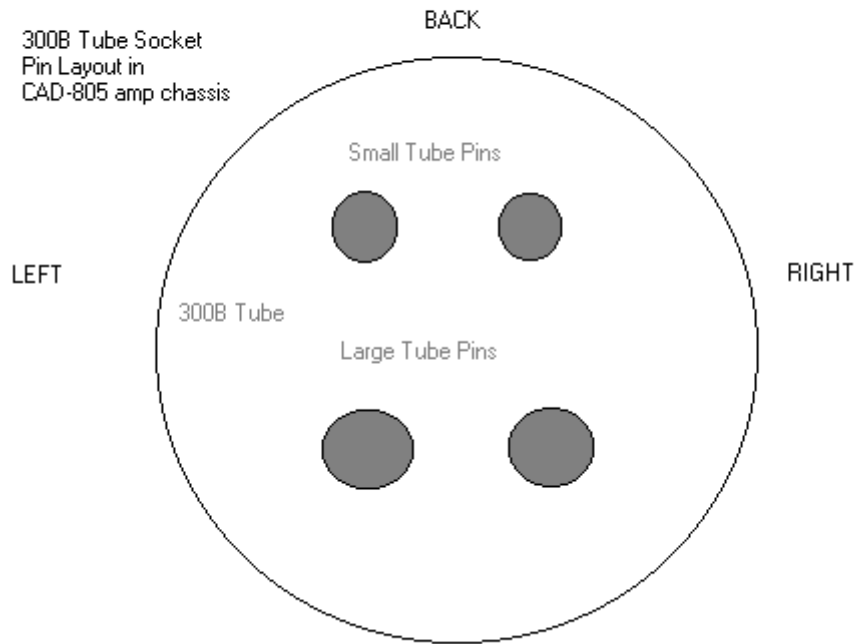
WITH THE POWER OFF: Set the Output Tube Bias control to the 211 or the 845 position. Install the chosen tube into the chassis. Look at the tube boxes and install the L 6SN7 tube into the Left socket, the R 6SN7 tube into the Right socket.

Please see next page for 300B tube placement.

DIAGRAMS

300B TUBE SOCKET PIN LAYOUT IN CHASSIS

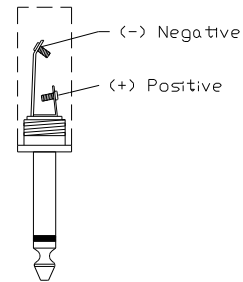
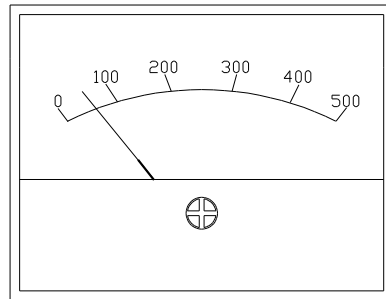
The LARGE pair of 300B tube pins should be installed toward the front of the CAD-805AE amplifier 300B tube sockets. LOOK CAREFULLY at the tube pins to be sure that you insert them correctly. It is possible to force the tube pins into the socket the wrong way if you are not careful! If you install the tube wrong you will probably damage the amplifier and the tube. This damage will not be covered by the manufacturer's warranty for a new amplifier. If you have any doubts about this, have the 300B tube installed by your dealer. If you will look carefully at the pins and install the large pins to the front of the socket all will be fine! These 300B tube pin installation instructions are valid for the CAD-805AE only.



Front of the tube socket installed on the CAD-805AE chassis

DIAGRAMS

BIAS CONTROLS



TO SET (OR CHECK) TUBE BIAS SETTING: Plug in the bias cable, connect the red clip to the positive (+) terminal on the volt ohm meter (VOM) and the black clip to the negative (-) terminal on the VOM. Slowly turn the Bias Pot screw *clockwise* to set the 300B Tube Bias to 60 mA on the milliamperage range.

The adjustment pot is located at the back of the chassis along with a bias jack for an external meter. Check the 300B tube bias current and adjust for a 60 mA reading. The meter is marked "SET" at the 60 mA mark. Check and readjust to 60 mA again after the CAD-805AE amplifier is warmed up for 10 minutes.

Note:

- **Bias is factory preset to 60 mA. Bias should be reset when installing a new replacement 300B tube.**

TROUBLESHOOTING GUIDE

SYMPTOM	CAUSE	REMEDY
Hum or "Buzzing" in speakers	Ground loop 300B tube with high plate current too high Intermittent or poor connection of interconnect	Install 2-pin adapter on AC cord to float the ground Check bias of 300B. If high, readjust to proper bias setting of 60 mA Replace bad interconnect cable
"Popping" or "Spitting" noise	Noisy tube Check bias of output tubes	If noise is in one channel through the speaker, swap one section of tubes at a time until the noise swaps channels. Replace the noisy tube. If high or fluctuating rapidly, replace output tube
AC fuse blows	Line voltage surge	Replace fuse
Tube fuse blows	Shorted tube (300B & 845 have separate fuses)	Replace tube

SERVICE AND CARE

CARE AND CLEANING

The cabinet housing and front panel of the CAD-805 Anniversary Edition may be cleaned with a soft cloth and Windex or a window cleaner. The frequency of cleaning will be governed by how many hours the CAD-805AE is operated and by operating environment cleanliness.

CAUTION:

- Do not let any liquids spill into the vents on top of the unit.

FACTORY SERVICE

Careful consideration has been given to the design of your CAD-805AE to keep maintenance problems to a minimum. Any problems should be referred to our Customer Service Department at 919-355-0010. DO NOT return the CAD-805AE to the factory without a return authorization number (RA), which can be obtained by logging in or creating a new account in our online Customer Service Center (www.caryaudio.com/support/servicereturns).

Cary Audio will assume no responsibility if the shipping company refuses to pay for damage due to your improper packing or lack of insurance should the unit be lost or damaged in shipment. Please retain and always use the original shipping carton for shipping the component. Also, Cary Audio reserves the right to return products sent in for service in a new box set at the customer's expense if the original packing material was damaged in the initial shipment, or if it is deemed unsatisfactory to use in return shipping.

NON-WARRANTY REPAIRS

Cary Audio will provide repair service for its products charging on a time and expense basis. At this time, the standard non-warranty service bench fee is \$125 for the first hour and \$95 per hour thereafter. Parts used for repairs as well as return shipping are additional. This may change and is not a quote for service. Please call us at 919-355-0010 for more information about out-of-warranty service and repair fees.

CAUTION

- Never remove or insert the back panel AC plug when the unit is on or the AC cord is plugged into the wall.

SERVICE AND CARE

TUBE REPLACEMENT

If it becomes necessary to replace the tubes, the same brand as installed new should be used. A complete new tube kit is available from Cary Audio. Although useful tube life varies depending on the nature and degree of use, under normal home use, the 845 or the 211 output tube and the 300B driver tube should last many years in the CAD-805AE. The 6SN7 input tubes should last even longer.

NOTE

- Any current production or New Old Stock (NOS) types of 211, 845, 6SN7 or 300B tubes will work fine in the CAD-805AE amplifier. The voltages are fine for all available types.

WARNING

- Make sure the amplifier is unplugged 30 minutes from the AC mains before replacing the tubes to avoid risk of shock and high heat from the 211 or 845 tube.

LIMITED WARRANTY

Cary Audio Warrants to the original United States purchaser for use in the United States the Following Cary Audio Products for the Periods Indicated:

1. Power Amplifiers, Integrated Amplifiers, Surround Sound Processors, and Preamplifiers have a three (3) year parts and labor warranty from the date of the original purchase from Cary Audio.
2. CD or SACD players, DVD players, or Music Servers have an eighteen (18) month parts and labor warranty from the date of the original purchase from Cary Audio.
3. Vacuum tubes, if any are used in the component, are offered a 90-day exchange policy against defects with the exception of the 300B vacuum tube that has a one (1) year exchange policy from the date of the original purchase from Cary Audio.

What is Covered and What is Not Covered

Except as specified below, this warranty covers parts and labor to correct all defects in materials and workmanship. The following are not covered by the warranty:

1. Damage, deterioration, malfunction or failure to meet performance specifications resulting from:
 - a. Accident, acts of nature, misuse, abuse, neglect or unauthorized product modifications
 - b. Improper installation, removal or maintenance, or failure to follow instructions supplied with the product.
 - c. Repair or attempted repair by anyone not authorized by Cary Audio to repair the product.
 - d. Any shipment of the product (claims must be presented to the carrier).
 - e. Any cause other than a product defect.
2. Cleaning, initial set-up, check-ups with no defects found, or charges incurred for installation, removal or reinstallation of the product.
3. Any product, on which the serial number has been defaced, modified or removed.
4. Batteries.
5. Accessories, including but not limited to, batteries, cables, mounting hardware and brackets, cleaning accessories, antenna and detachable power cords.
6. Warranty is void if purchase was made from anyone other than an authorized Cary Audio dealer.

Who May Enforce the Warranty?

This warranty extends to products purchased directly from Cary Audio or an authorized Cary Audio dealer. Purchasers should inquire of the dealer regarding the nature and extent of the dealer's warranty, if any.

LIMITED WARRANTY

To obtain such warranty service, the original purchaser must complete and send in the Warranty Registration Card within 15 days of purchase.

What Will We Pay For?

We will pay for all labor and material expenses for items covered by the warranty. Payment of shipping charges is discussed in the next section of this warranty.

How You Can Get Service?

In the event that the owner needs to return the unit to Cary Audio for service or repair of a possible defect, he must follow the following steps:

1. Create a new account or login to our Customer Service Center (www.caryaudio.com/support/servicereturns) to obtain a Return Merchandise Authorization (RMA) number. Once the account is set up or you have logged in, click on "Open New RMA" to begin entering the information to create an RMA that is needed to return or exchange a product. You will be given an RMA number, which must appear on the label of the box you ship back.
2. Submit a copy of the original sales receipt; blank receipts will not validate the limited warranty for service by Cary Audio. The original sales receipt must contain the following information:
 - a. The authorized Cary Audio dealer's name
 - b. The date of purchase
 - c. The unit's sales price
 - d. The buyer's name and address
 - e. Describe in detail the problem.
 - f. Note the unit's model number and serial number.
3. Deliver by either of these methods:
 - a. With all freight and insurance charges prepaid and in its original packing container or equivalent, ship the component to Cary Audio, 1020 Goodworth Drive Apex, NC 27539.
 - b. Hand-deliver the product to Cary Audio (address noted above) or the nearest authorized service facility.

Limitation of Implied Warranties

All implied warranties, including warranties of merchantability and fitness for particular purchase, are limited in duration to the length of this warranty.

LIMITED WARRANTY

Exclusion of Damages

Cary Audio's liability for any defective product is limited to repair or replacement of the product at Cary Audio's option. Cary Audio shall not be liable for damage to other products caused by any defects in Cary Audio products, damages based upon inconvenience or loss of use of the product, or any other damages, whether incidental, consequential, or otherwise.

How State Law Relates to the Warranty

Some states do not allow limitations on how long an implied warranty lasts and/or do not allow the exclusion or limitation of incidental or consequential damages, so the above limitations or exclusions may not apply to you.

This warranty gives you specific legal rights, and you may also have other rights which vary from state to state.

International Purchasers (Export Markets)

Cary Audio warrants its merchandise to purchasers within the United States exclusively for use within the United States. It provides no other warranties, expressed or implied. If you are living outside of the United States, please consult your local dealer or distributor to determine the details of your local warranty.

CARY AUDIO DESIGN

6301 Chapel Hill Road | Raleigh, NC 27607
phone 919-355-0010
fax 919-573-9573
www.caryaudio.com